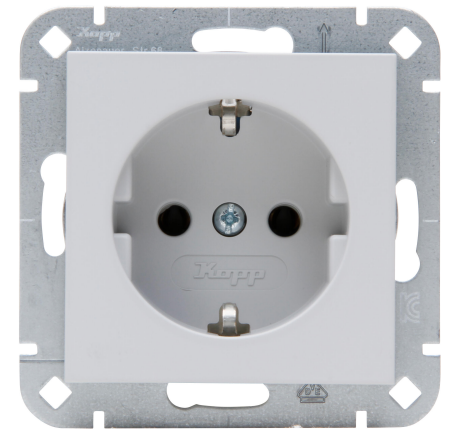


Art.No.	article name
---------	--------------

949334008	HK07 - Earthed socket outlet, colour: grey matt
-----------	---

HK07 - Safety socket, without increased protection against accidental contact, nominal current 16A, nominal voltage 250V~, protection class IP20, colour: grey matt



Technical data	949334008
----------------	-----------

Connection type	Screw and Push-in clamp
With signal lamp	no
With enhanced contact protection	no
Frequency	50 - 50
Label space/information surface	no
Eject-mechanism	no
Material	Plastic
Rated fault current	0.00 A
Type of fastening	Mounting with claw and screw
Impact strength	IK00
Transparent	no
With miniature fuse	no
With loop through function	yes
With function lighting	no
With orientation lighting	no
Number of modules (module system)	1
Number of active pins (round)	0
Number of active pins (flat)	2
Min. depth of built-in installation box	32.0 mm
Compatible with Apple HomeKit	no
Compatible with Google Assistant	no
Compatible with Amazon Alexa	no
Metallic colour	no
Nominal current	16.00 A
Nominal voltage	250 V
Mounting method	EV000383 - Flush-mounted (plaster)
Colour	Grey
Model	Socket outlet CEE 7/3 (type F)
Halogen free	yes
Lockable	no
With hinged lid	no
Surface protection	Lacquered
Number of phases	1
With on/off switch	no
For heavy conditions (according to VDE)	no

Technische Beschreibungen, Abbildungen und Leistungsangaben stellen keine zugesagten Eigenschaften dar, sondern sind nur unverbindliche Informationen. Änderungen aufgrund technischen Fortschritts, Normänderungen, veränderter Fertigungsverfahren oder Konstruktionsverbesserungen bleiben ausdrücklich vorbehalten. Stand: 12.09.2024

Technical data		949334008
Rotated central insert	no	
Over voltage protection	no	
Fault current protection	no	
Insulated mounting	no	
RAL-number (similar)	7047	
Width of device	55.0 mm	
Height of device	55.0 mm	
Depth of device	41.1 mm	
Number of socket outlets switchable	0	
IFTTT support available	no	
Concurrently switching neutral conductor	no	
Special power supply	No special power supply	
Material quality	Thermoplastic	
Surface finishing	Matt	
Imprint/indication	None	
Suitable for degree of protection	IP20	
Anti-bacterial treatment	no	
With built-in bluetooth speaker	nein	
Number of ports USB-A	0	
Number of ports USB-C	0	
With Wi-Fi signal repeater	nein	
Colour of switch operator	sonstige	
Protective contact	flat	
Concurrently switching neutral conductor	0	
Number of loop throughs	1	