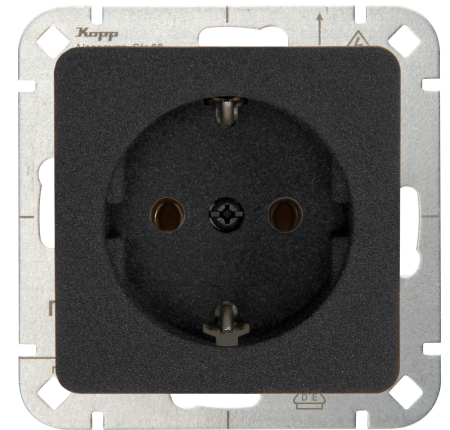


Art.No. article name

914815005 HK02 - Earthed socket outlet - colour: anthracite

HK02 - Earthed socket outlet - colour: anthracite



Technical data 914815005

Connection type	Screw and Push-in clamp
With signal lamp	no
With enhanced contact protection	no
Frequency	50 50 Hz
Label space/information surface	no
Eject-mechanism	no
Material	Plastic
Rated fault current	0.00 A
Type of fastening	Mounting with claw and screw
Impact strength	IK00
Transparent	no
With miniature fuse	no
With loop through function	yes
With function lighting	no
With orientation lighting	no
Number of modules (module system)	1
Number of active pins (round)	0
Number of active pins (flat)	2
Min. depth of built-in installation box	32.0 mm
Compatible with Apple HomeKit	no
Compatible with Google Assistant	no
Compatible with Amazon Alexa	no
Metallic colour	no
Nominal current	16.00 A
Nominal voltage	250 V
Mounting method	EV000383 - Flush-mounted (plaster)
Colour	anthracite
Model	Socket outlet CEE 7/3 (type F)
Halogen free	yes
Lockable	no
With hinged lid	no
Surface protection	Lacquered
Number of phases	1
With on/off switch	no
For heavy conditions (according to VDE)	no
Rotated central insert	no

Technische Beschreibungen, Abbildungen und Leistungsangaben stellen keine zugesagten Eigenschaften dar, sondern sind nur unverbindliche Informationen. Änderungen aufgrund technischen Fortschritts, Normänderungen, veränderter Fertigungsverfahren oder Konstruktionsverbesserungen bleiben ausdrücklich vorbehalten. Stand: 18.04.2024

Technical data		914815005
Over voltage protection	no	
Fault current protection	no	
Insulated mounting	no	
RAL-number (similar)	7024	
Width of device	55.0 mm	
Height of device	55.0 mm	
Depth of device	41.1 mm	
Number of socket outlets switchable	0	
IFTTT support available	no	
Concurrently switching neutral conductor	no	
Special power supply	No special power supply	
Material quality	Thermoplastic	
Surface finishing	Matt	
Imprint/indication	None	
Suitable for degree of protection (IP)	IP20	
Anti-bacterial treatment	no	
With built-in bluetooth speaker	nein	
Number of ports USB-A	0	
Number of ports USB-C	0	
With Wi-Fi signal repeater	nein	
Colour of switch operator	farblos	
Protective contact	flat	
Concurrently switching neutral conductor	0	
Number of loop throughs	1	