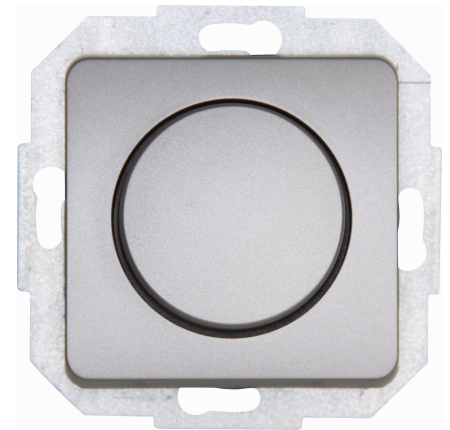


Art.No.	article name
---------	--------------

845920084	MILANO - Push-changeover universal-dimmer, colour:steel
-----------	---

Push changeover universal dimmer. Suitable for incandescent lamps and 230V halogen lamps, dimmable LEDs and LV halogen lamps with conventional transformers (please note the technical information from the transformer manufacturer).



Technical data	845920084
Connection type	Screwed terminal
Frequency	50 50 Hz
Material	Plastic
Type of fastening	Mounting with claw and screw
Impact strength	IK00
Nominal voltage	230,00 230,00 V
Transparent	no
Dimming phase cut-off	yes
Dimming phase cut-on	yes
Min. depth of built-in installation box	32.0 mm
Nominal power resistive load	5 250 W
Nominal power inductive load	5 250 VA
Nominal power capacitive load	5 250 VA
Compatible with Apple HomeKit	no
Compatible with Google Assistant	no
Compatible with Amazon Alexa	no
Max. switching power LED	100 W
Mounting method	EV000383 - Flush-mounted (plaster)
Assembly arrangement	Basic element with central cover plate
Method of operation	Turn/push button
Colour	Stainless steel
Halogen free	yes
Surface protection	Lacquered
Light value memory	yes
Substation input	yes
RAL-number (similar)	9006
Serial dimmer	no
Applicable with movement sensor	no
Applicable with transmission button	no
Applicable with infrared button	no
Applicable with presence indicator	no
Applicable with button	yes
Applicable with time switch/timer	no
Width of device	55.0 mm

Technische Beschreibungen, Abbildungen und Leistungsangaben stellen keine zugesagten Eigenschaften dar, sondern sind nur unverbindliche Informationen. Änderungen aufgrund technischen Fortschritts, Normänderungen, veränderter Fertigungsverfahren oder Konstruktionsverbesserungen bleiben ausdrücklich vorbehalten. Stand: 28.03.2024

Technical data		845920084
Height of device	55.0 mm	
Depth of device	33.0 mm	
IFTTT support available	no	
App control via Bluetooth	no	
Material quality	Thermoplastic	
Type of load	Universal and LED Retrofit	
Surface finishing	Glossy	
Suitable for degree of protection (IP)	IP20	