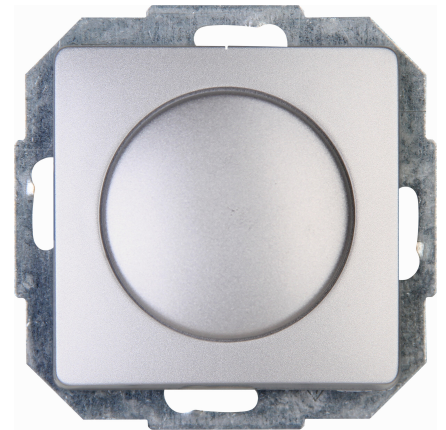


Art.No.	article name
---------	--------------

843420087	PARIS - Combination device, push-changeover, LED-dimmer, colour: silver
-----------	---

Combination device - push changeover switch, LED dimmer. Suitable for incandescent lamps and 230V halogen lamps, dimmable LEDs and LV halogen lamps with conventional transformers (please note the technical information from the transformer manufacturer). Adjustable basic brightness, with soft click, phase cut RL 20-250W / VA, LED 3-35W, 230V ~, 50Hz



Technical data	843420087
Connection type	Screwed terminal
Frequency	50 50 Hz
Material	Plastic
Impact strength	IK00
Nominal voltage	230,00 230,00 V
Transparent	no
Number of modules (module system)	1
Dimming phase cut-off	yes
Dimming phase cut-on	yes
Min. depth of built-in installation box	32.0 mm
Nominal power inductive load	7 110 VA
Compatible with Apple HomeKit	no
Compatible with Google Assistant	no
Compatible with Amazon Alexa	no
Assembly arrangement	Basic element
Method of operation	Turn/push button
Colour	Silver
Halogen free	yes
Surface protection	Lacquered
Light value memory	yes
Substation input	no
RAL-number (similar)	7040
Serial dimmer	no
Applicable with movement sensor	no
Applicable with transmission button	no
Applicable with infrared button	no
Applicable with presence indicator	no
Applicable with button	no
Applicable with time switch/timer	no
Width of device	57.0 mm
Height of device	57.0 mm
Depth of device	32.0 mm
App control via Bluetooth	no

Technische Beschreibungen, Abbildungen und Leistungsangaben stellen keine zugesagten Eigenschaften dar, sondern sind nur unverbindliche Informationen. Änderungen aufgrund technischen Fortschritts, Normänderungen, veränderter Fertigungsverfahren oder Konstruktionsverbesserungen bleiben ausdrücklich vorbehalten. Stand: 28.03.2024

Technical data		843420087
Type of load	Inductive load	
Surface finishing	Glossy	