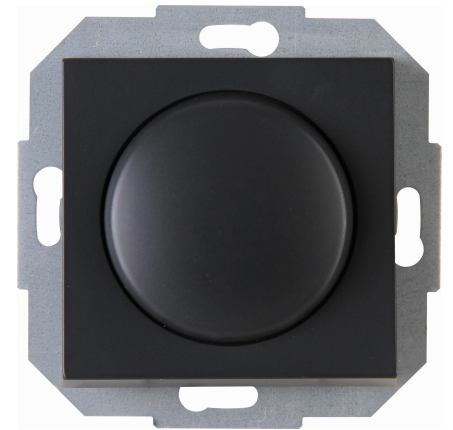


Art.No.	article name
842915089	ATHENIS - combination device, push-changeover, LED-dimmer, colour: anthracite

ATHENIS - combination device - push changeover switch, LED dimmer. Suitable for incandescent lamps and 230V halogen lamps, dimmable LEDs and LV halogen lamps with conventional transformers (please note the technical information from the transformer manufacturer). Adjustable basic brightness, with soft click, phase cut RL 20-250W / VA, LED 3-35W, 230V ~, 50Hz, colour: anthracite



Technical data	842915089
Connection type	Screwed terminal
Number of units	1
Frequency	50 50 Hz
Material	Plastic
Type of fastening	Mounting with claw and screw
Impact strength	IK00
Nominal voltage	230,00 230,00 V
Transparent	no
Number of modules (module system)	1
Dimming phase cut-off	no
Dimming phase cut-on	yes
Min. depth of built-in installation box	32.0 mm
Nominal power resistive load	7 110 W
Nominal power inductive load	7 110 VA
Nominal power capacitive load	7 110 VA
Compatible with Apple HomeKit	no
Compatible with Google Assistant	no
Compatible with Amazon Alexa	no
Max. switching power LED	35 W
Mounting method	EV000383 - Flush-mounted (plaster)
Assembly arrangement	Basic element
Method of operation	Turn/push button
Colour	anthracite
Halogen free	yes
Surface protection	Lacquered
Light value memory	yes
Substation input	no
RAL-number (similar)	7024
Serial dimmer	no
Applicable with movement sensor	no
Applicable with transmission button	no
Applicable with infrared button	no

Technische Beschreibungen, Abbildungen und Leistungsangaben stellen keine zugesagten Eigenschaften dar, sondern sind nur unverbindliche Informationen. Änderungen aufgrund technischen Fortschritts, Normänderungen, veränderter Fertigungsverfahren oder Konstruktionsverbesserungen bleiben ausdrücklich vorbehalten. Stand: 28.03.2024

Technical data		842915089
Applicable with presence indicator	no	
Applicable with button	no	
Applicable with time switch/timer	no	
Width of device	55.0 mm	
Height of device	55.0 mm	
Core cross section	1,5 2,5 mm ²	
IFTTT support available	no	
App control via Bluetooth	no	
Material quality	Aluminium	
Type of load	Inductive load	
Surface finishing	Matt	
Suitable for degree of protection (IP)	IP20	
Min. brightness controllable	ja	