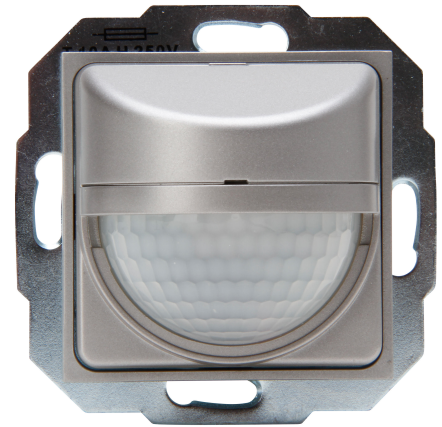


Art.No. article name

840647050 HK07 - INFRAcontrol R180°, infrared motion detector, 3-wire device, max. 2,000W, 50x50mm, color: steel

INFRAcontrol motion detector R180° 50x50mm, 3-wire device, Infrared detection, detection angle 180°, flush mounted, detection range up to 9m, protection class IP40, 230VAC, 50Hz, Incandescent lamps: max. 2,00W, high-voltage halogen lamps: max. 1,200W, Fluorescent lamps: max. 900VA (series-compensated), low-voltage halogen lamps: max. 1,000VA, energy-saving lamps: max. 600VA, LED lamps: max. 500W/VA, Lag time: 20s-30min, with switch-off warning, pulse output, response brightness adjustable 5/30/100 Lux, programming range/memory function ambient brightness: 5–1,000 Lux, with slide switch for permanently OFF, automatic, permanently ON, suitable for switch series HK07 incl. intermediate frame, color: steel



Technical data	840647050
Connection type	Screwed terminal
Height	50.0 mm
Depth	65.0 mm
Voltage type	AC Hz
Switching-on delay	0 s
Diameter	50.0 mm
Built-in width	50.0 mm
Staircase monitoring	no
Bridging switch	yes
Suitable for wireless transmission	no
Max. switching power	2000 W
Material	Plastic
Dim function with dimmer basic element	no
Response value luminosity	5 1000 lx
Suitable for C-load	yes
Diameter detection range on floor	6.00 m
Remote operation	no
Built-in length	32.0 mm
Impact strength	IK00
Nominal voltage	230,00 230,00 V
With alarm function	no
Transparent	no
Detection angle horizontal	0 180 °
Min. switch-on time	20 s
Max. duty cycle	30 min
Optimum mounting height	1.2 m
Pivoting range sensor, horizontal	0 0 °
Pivoting range sensor, vertical	0 0 °
Number of switching zones	3

Technische Beschreibungen, Abbildungen und Leistungsangaben stellen keine zugesagten Eigenschaften dar, sondern sind nur unverbindliche Informationen. Änderungen aufgrund technischen Fortschritts, Normänderungen, veränderter Fertigungsverfahren oder Konstruktionsverbesserungen bleiben ausdrücklich vorbehalten. Stand: 27.03.2024

Technical data	840647050
With DALI interface	no
Min. depth of built-in installation box	32.0 mm
Compatible with Apple HomeKit	no
Compatible with Google Assistant	no
Compatible with Amazon Alexa	no
Max. switching power LED	500 W
Mounting method	Flush mounted
Colour	steel
Width	50.0 mm
Model	Movement sensor
Halogen free	yes
Surface protection	Untreated
Creep-under protection	yes
Built-in depth	31.0 mm
With remote control	no
Built-in diameter	50.0 mm
Suitable for wall mounting	yes
Max. transmission range frontally	9.000 m
Max. transmission range sideways	9.000 m
Temperature	0 45 °C
Max. starting current	10.00 A
HVAC-control	no
Constant light control	no
Substation input	yes
RAL-number (similar)	9022
With signal unit	no
Control current	0.00 mA
Teach-function for response value luminosity	no
Networkable	no
Forced switch off	yes
Response value luminosity adjustable	yes
IFTTT support available	no
Forced switch on	yes
Min. starting current	0.00 A
Degree of protection (IP)	IP40
Animal zone	no
Material quality	Thermoplastic
Surface finishing	Matt
Sensor type	Passive infrared
Response value sensitivity adjustable	ja
Anti-bacterial treatment	no
Suitable for ceiling mounting	nein