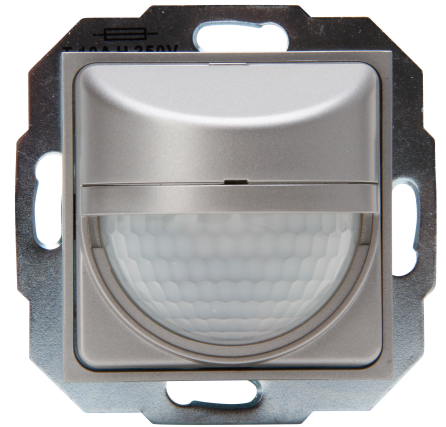


Art.No.	article name
840447054	HK07 - INFRAcontrol T 180°, infrared motion detector, 2-wire device, 5–300W, 50x50mm, colour: steel

INFRAcontrol motion detector T180° 50x50mm, 2-wire device, Infrared detection, detection angle 180°, flush mounted, detection range up to 9m, protection class IP40, 230VAC, 50Hz, Incandescent lamps: 5-300W, high-voltage halogen lamps: 5-300W, low-voltage halogen lamps: 5-150VA, Fluorescent lamps (uncompensated): 5-150VA, LED lamps: 5-100W/VA, lag time: 5s-30min, response brightness adjustable 5/30/100/300, programming range/memory function 5-1,000 Lux, with slide switch for permanently OFF, automatic, permanently ON, suitable for switch series HK07 incl. intermediate frame, colour: steel



Technical data	840447054
Connection type	Screwed terminal
Height	65.0 mm
Depth	65.0 mm
Voltage type	AC Hz
Switching-on delay	0 s
Switch-off delay	0 s
Diameter	50.0 mm
Built-in width	50.0 mm
Staircase monitoring	no
Bridging switch	yes
Suitable for wireless transmission	no
Max. switching power	300 W
Material	Plastic
Dim function with dimmer basic element	no
Response value luminosity	5 1000 lx
Suitable for C-load	yes
Diameter detection range on floor	6 m
Remote operation	no
Built-in length	31.5 mm
Impact strength	IK00
Nominal voltage	230 230 V
With alarm function	no
Transparent	no
Detection angle horizontal	0 180 °
Min. switch-on time	5 s
Max. duty cycle	30 min
Optimum mounting height	1.2 m
Pivoting range sensor, horizontal	0 0 °
Pivoting range sensor, vertical	0 0 °
Number of switching zones	3

Technische Beschreibungen, Abbildungen und Leistungsangaben stellen keine zugesagten Eigenschaften dar, sondern sind nur unverbindliche Informationen. Änderungen aufgrund technischen Fortschritts, Normänderungen, veränderter Fertigungsverfahren oder Konstruktionsverbesserungen bleiben ausdrücklich vorbehalten. Stand: 23.04.2024

Technical data	840447054
With DALI interface	no
Min. depth of built-in installation box	32.0 mm
Compatible with Apple HomeKit	no
Compatible with Google Assistant	no
Compatible with Amazon Alexa	no
Max. switching power LED	100 W
Mounting method	Flush mounted
Colour	steel
Width	55.0 mm
Model	Movement sensor
Halogen free	yes
Surface protection	Untreated
Creep-under protection	yes
Built-in depth	31.5 mm
With remote control	no
Built-in diameter	50 mm
Suitable for wall mounting	yes
Max. transmission range frontally	9.000 m
Max. transmission range sideways	9.000 m
Temperature	0 45 °C
Max. starting current	10.00 A
HVAC-control	no
Constant light control	no
Substation input	no
RAL-number (similar)	9022
With signal unit	no
Control current	0.00 mA
Teach-function for response value luminosity	yes
Networkable	no
Forced switch off	yes
Scan angle	180 °
Response value luminosity adjustable	yes
IFTTT support available	no
Forced switch on	yes
Degree of protection (IP)	IP40
Animal zone	no
Material quality	Thermoplastic
Surface finishing	Matt
Sensor type	Passive infrared
Response value sensitivity adjustable	ja
Anti-bacterial treatment	no
Suitable for ceiling mounting	nein
Farbe (Kopp-Bezeichnung)	steel