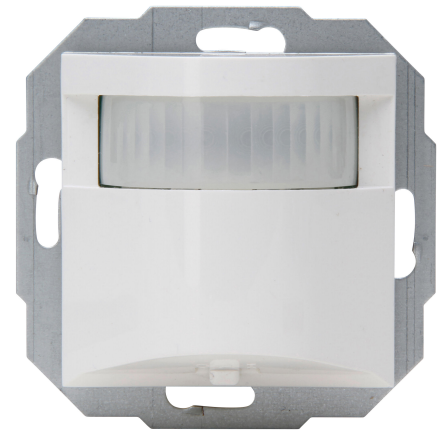


Art.No.	article name
808429557	HK07 - INFRAcontrol R180°, infrared motion detector, 3-wire device, max. 1,000W, 55x55mm, color: pure-white

INFRAcontrol motion detector R180° 55x55mm, 3-wire device, Infrared detection, detection angle 180°, flush mounted, detection range up to 10m, protection class IP20, 230VAC, 50Hz, Incandescent lamps: max. 1,00W, high-voltage halogen lamps: max. 1,000W, Fluorescent lamps: max. 1,000VA (series-compensated), low-voltage halogen lamps: max. 1,000VA, LED lamps: max. 300W/VA, Lag time: 4-240 seconds, response brightness stepless adjustable, with slide switch for permanently OFF, automatic, permanently ON, suitable for switch series HK07, color: pure-white



Technical data	808429557
Connection type	Screwed terminal
Height	55.0 mm
Depth	61.4 mm
Voltage type	AC Hz
Switching-on delay	0 s
Switch-off delay	0 s
Diameter	50.0 mm
Built-in width	55.0 mm
Staircase monitoring	no
Bridging switch	yes
Suitable for wireless transmission	no
Max. switching power	1000 W
Material	Plastic
Dim function with dimmer basic element	no
Response value luminosity	5 1000 lx
Suitable for C-load	yes
Remote operation	no
Built-in length	32.0 mm
Impact strength	IK00
Nominal voltage	230,00 230,00 V
With alarm function	no
Transparent	no
Detection angle horizontal	0 180 °
Min. switch-on time	4 s
Max. duty cycle	4 min
Optimum mounting height	1.1 m
Pivoting range sensor, horizontal	0 0 °
Pivoting range sensor, vertical	0 0 °
Number of switching zones	1
With DALI interface	no

Technical data		808429557
Min. depth of built-in installation box	32.0 mm	
Compatible with Apple HomeKit	no	
Compatible with Google Assistant	no	
Compatible with Amazon Alexa	no	
Max. switching power LED	300 W	
Mounting method	Flush mounted	
Colour	White	
Width	55.0 mm	
Model	Movement sensor	
Halogen free	yes	
Surface protection	Untreated	
Creep-under protection	no	
Built-in depth	31.0 mm	
With remote control	no	
Built-in diameter	50.0 mm	
Suitable for wall mounting	yes	
Max. transmission range frontally	10.000 m	
Max. transmission range sideways	10.000 m	
Temperature	0 40 °C	
Max. starting current	16.00 A	
HVAC-control	no	
Constant light control	no	
Substation input	yes	
RAL-number (similar)	9010	
With signal unit	no	
Control current	0.00 mA	
Teach-function for response value luminosity	no	
Networkable	no	
Forced switch off	yes	
Response value luminosity adjustable	yes	
IFTTT support available	no	
Forced switch on	yes	
Min. starting current	0.17 A	
Degree of protection (IP)	IP20	
Animal zone	no	
Material quality	Thermoplastic	
Surface finishing	Glossy	
Sensor type	Passive infrared	
Response value sensitivity adjustable	ja	
Anti-bacterial treatment	no	
Suitable for ceiling mounting	nein	
Farbe (Kopp-Bezeichnung)	pure white	