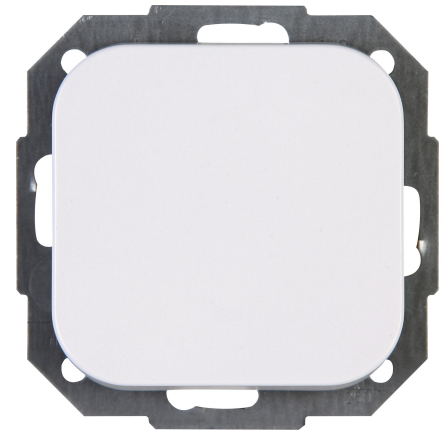


Art.No.	article name
689302004	Pushbutton switch

Pushbutton switch, 10AX, 250V~, DONAU, arctic-white



Technical data		689302004
Connection type	Push-in clamp	
Feedback-signal contact	no	
Material	Plastic	
Type of fastening	Mounting with claw and screw	
Number of rockers	1	
Impact strength	IK00	
Min. depth of built-in installation box	32.0 mm	
Compatible with Apple HomeKit	no	
Compatible with Google Assistant	no	
Compatible with Amazon Alexa	no	
Nominal voltage	250	
Mounting method	EV000383 - Flush-mounted (plaster)	
Assembly arrangement	Basic element with central cover plate	
Method of operation	Rocker/button	
Colour	White	
Halogen free	yes	
Surface protection	Untreated	
Rated current	10.00 A	
RAL-number (similar)	9016	
Switching current for fluorescent lamps	10 AX	
Push button switch	yes	
Width of device	58.0 mm	
Height of device	58.0 mm	
Washing machine switch	no	
Material quality	Thermoplastic	
Surface finishing	Glossy	
Suitable for degree of protection (IP)	IP20	
Anti-bacterial treatment	no	
Farbe (Kopp-Bezeichnung)	arctic white	