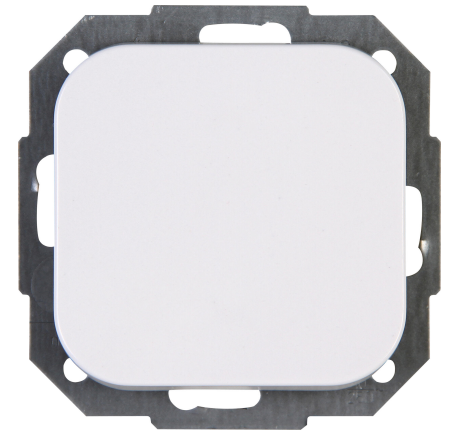


| Art.No. | article name |
|-----------|--|
| 688602002 | Universal switch (off and change-over) |

Universal switch (off and change-over switch)), 10AX, 250V~, DONAU, arctic-white



| Technical data | 688602002 |
|---|--|
| Connection type | Push-in clamp |
| Feedback-signal contact | no |
| Material | Plastic |
| Type of fastening | Mounting with claw and screw |
| Number of rockers | 1 |
| Impact strength | IK00 |
| Min. depth of built-in installation box | 32.0 mm |
| Compatible with Apple HomeKit | no |
| Compatible with Google Assistant | no |
| Compatible with Amazon Alexa | no |
| Nominal voltage | 250 |
| Mounting method | EV000383 - Flush-mounted (plaster) |
| Assembly arrangement | Basic element with central cover plate |
| Method of operation | Rocker/button |
| Colour | White |
| Halogen free | yes |
| Surface protection | Untreated |
| Rated current | 10.00 A |
| RAL-number (similar) | 9016 |
| Switching current for fluorescent lamps | 10 AX |
| Push button switch | no |
| Width of device | 58.0 mm |
| Height of device | 58.0 mm |
| Washing machine switch | no |
| Material quality | Thermoplastic |
| Surface finishing | Glossy |
| Suitable for degree of protection (IP) | IP20 |
| Anti-bacterial treatment | no |
| Farbe (Kopp-Bezeichnung) | arctic white |