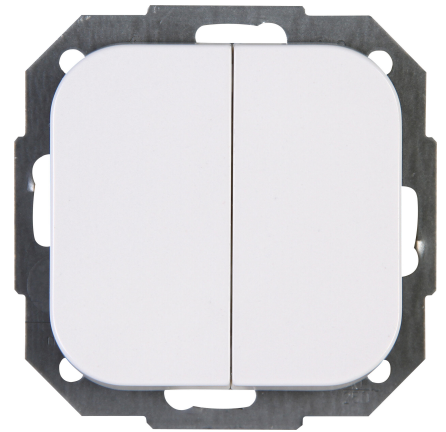


Art.No.	article name
688502009	Series switch, arctic white

Series switch, 10AX, 250V~, DONAU, arctic white



Technical data	688502009
Connection type	Push-in clamp
Feedback-signal contact	no
Material	Plastic
Type of fastening	Mounting with claw and screw
Number of rockers	2
Impact strength	IK00
Number of modules (module system)	0
Min. depth of built-in installation box	34.0 mm
Compatible with Apple HomeKit	no
Compatible with Google Assistant	no
Compatible with Amazon Alexa	no
Nominal voltage	250 V
Mounting method	EV000383 - Flush-mounted (plaster)
Assembly arrangement	Basic element with complete housing
Method of operation	Rocker/button
Colour	White
Halogen free	yes
With mounting plate	yes
Surface protection	Untreated
Built-in depth	26.0 mm
Rated current	16.00 A
RAL-number (similar)	9016
Switching current for fluorescent lamps	10 AX
Push button switch	no
Width of device	58.0 mm
Height of device	58.0 mm
IFTTT support available	no
Washing machine switch	no
Illumination	No
Material quality	Thermoplastic
Label space/information surface	No
Surface finishing	Glossy
Wiring system	Series switch
Suitable for degree of protection	IP20
Anti-bacterial treatment	no
Heating switch	nein

Clever sein.
Kopp einschalten.

Kopp

Technical data

688502009

Farbe (Kopp-Bezeichnung)

arctic white

Technische Beschreibungen, Abbildungen und Leistungsangaben stellen keine zugesagten Eigenschaften dar, sondern sind nur unverbindliche Informationen. Änderungen aufgrund technischen Fortschritts, Normänderungen, veränderter Fertigungsverfahren oder Konstruktionsverbesserungen bleiben ausdrücklich vorbehalten. Stand: 02.01.2026

Heinrich Kopp GmbH | Alzenauer Strasse 68 | 63796 Kahl/Main | Tel.: +49 6188 40-0 | E-Mail: vertrieb@kopp.eu | www.kopp.eu