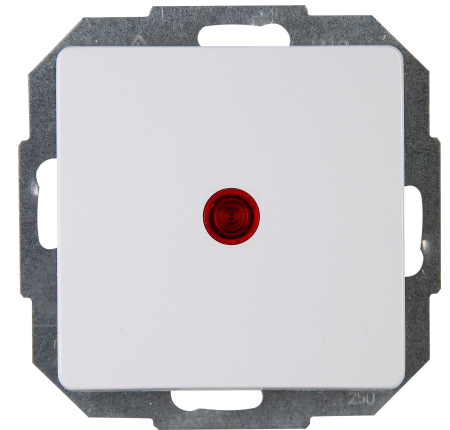


Art.No.	article name
651693084	Control switch, colour: arctic white

Control switch (off and change-over switch), illuminated, 10AX, 250V~, PA-RIS, colour: arctic white



Technical data	651693084
Connection type	Push-in clamp
Feedback-signal contact	no
Material	Plastic
Type of fastening	Mounting with claw and screw
Number of rockers	1
Impact strength	IK00
Number of modules (module system)	1
Min. depth of built-in installation box	34.0 mm
Compatible with Apple HomeKit	no
Compatible with Google Assistant	no
Compatible with Amazon Alexa	no
Nominal voltage	250 V
Mounting method	EV000383 - Flush-mounted (plaster)
Assembly arrangement	Basic element with central cover plate
Method of operation	Rocker/button
Colour	White
Halogen free	yes
With mounting plate	yes
Surface protection	Untreated
Built-in depth	26.6 mm
Rated current	16.00 A
RAL-number (similar)	9016
Switching current for fluorescent lamps	10 AX
Push button switch	no
Width of device	57.0 mm
Height of device	57.0 mm
Depth of device	40.5 mm
IFTTT support available	no
Washing machine switch	no
Illumination	No
Material quality	Thermoplastic
Type of lighting	Glow lamp
Label space/information surface	No
Surface finishing	Glossy
Wiring system	Two-way switch

Technical data		651693084
Suitable for degree of protection	IP20	
Anti-bacterial treatment	no	
Heating switch	nein	
Farbe (Kopp-Bezeichnung)	arctic white	