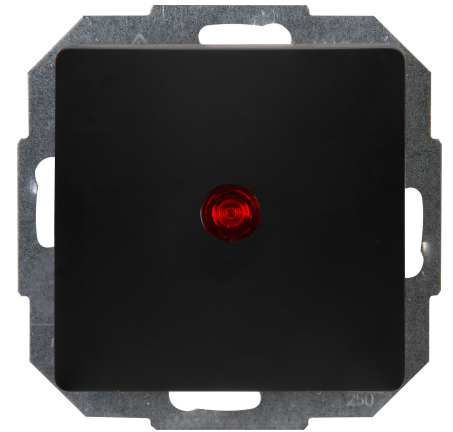


| Art.No.   | article name  |
|-----------|---|
| 651674081 | PARIS - controll switch (off and change-over switch), illuminated, colour: matt black |

Control switch (off and change-over switch), illuminated, 10AX, 250V~, PARIS, black



| Technical data                          | 651674081                              |
|---|--|
| Connection type                         | Push-in clamp                          |
| Feedback-signal contact                 | no                                     |
| Material                                | Plastic                                |
| Type of fastening                       | Mounting with claw and screw           |
| Number of rockers                       | 1                                      |
| Impact strength                         | IK00                                   |
| Number of modules (module system)       | 1                                      |
| Min. depth of built-in installation box | 32.0 mm                                |
| Compatible with Apple HomeKit           | no                                     |
| Compatible with Google Assistant        | no                                     |
| Compatible with Amazon Alexa            | no                                     |
| Nominal voltage                         | 250                                    |
| Mounting method                         | EV000383 - Flush-mounted (plaster)     |
| Assembly arrangement                    | Basic element with central cover plate |
| Method of operation                     | Rocker/button                          |
| Colour                                  | Black                                  |
| Halogen free                            | yes                                    |
| With mounting plate                     | yes                                    |
| Surface protection                      | Lacquered                              |
| Built-in depth                          | 26.6 mm                                |
| Rated current                           | 10.00 A                                |
| RAL-number (similar)                    | 9005                                   |
| Switching current for fluorescent lamps | 10 AX                                  |
| Push button switch                      | no                                     |
| Width of device                         | 57.0 mm                                |
| Height of device                        | 57.0 mm                                |
| Depth of device                         | 40.5 mm                                |
| IFTTT support available                 | no                                     |
| Washing machine switch                  | no                                     |
| Illumination                            | No                                     |
| Material quality                        | Thermoplastic                          |
| Type of lighting                        | Glow lamp                              |
| Label space/information surface         | No                                     |
| Function lighting                       | Illuminated (on)                       |
| Surface finishing                       | Matt                                   |

| Technical data                         |                | 651674081 |
|--|----------------|-----------|
| Wiring system                          | Two-way switch |           |
| Suitable for degree of protection (IP) | IP20           |           |
| Anti-bacterial treatment               | no             |           |
| Heating switch                         | nein           |           |