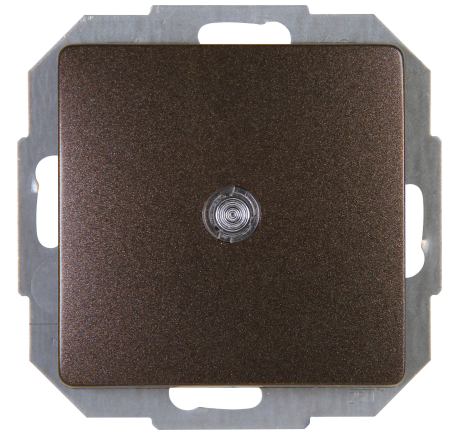


Art.No.	article name
650676082	Universal switch (off and change-over) illuminated

Universal switch (off and change-over switch), illuminated, 10AX, 250V~, PA-RIS, rosewood brown



Technical data	650676082
Connection type	Push-in clamp
Feedback-signal contact	no
Material	Plastic
Type of fastening	Mounting with claw and screw
Number of rockers	1
Impact strength	IK00
Number of modules (module system)	1
Min. depth of built-in installation box	32.0 mm
Compatible with Apple HomeKit	no
Compatible with Google Assistant	no
Compatible with Amazon Alexa	no
Nominal voltage	250
Mounting method	EV000383 - Flush-mounted (plaster)
Assembly arrangement	Basic element with central cover plate
Method of operation	Rocker/button
Colour	brown
Halogen free	yes
With mounting plate	yes
Surface protection	Untreated
Built-in depth	26.6 mm
Rated current	10.00 A
RAL-number (similar)	9016
Switching current for fluorescent lamps	10 AX
Push button switch	no
Width of device	57.0 mm
Height of device	57.0 mm
Depth of device	40.5 mm
IFTTT support available	no
Washing machine switch	no
Illumination	No
Material quality	Thermoplastic
Label space/information surface	No
Function lighting	Illuminated (on)
Surface finishing	Glossy
Wiring system	Two-way switch

Technical data		650676082
Suitable for degree of protection (IP)	IP20	
Anti-bacterial treatment	no	
Heating switch	nein	