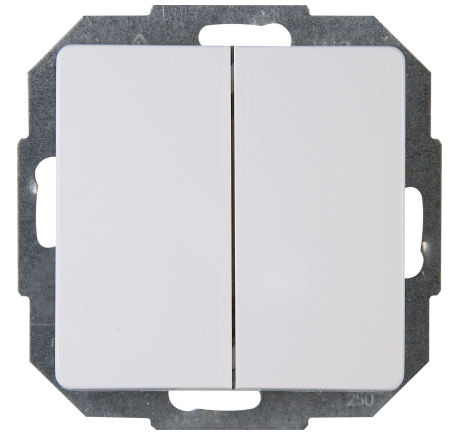


Art.No.	article name
650502062	Series switch

Series switch, 10AX, 250V~, PARIS, arctic-white



Technical data	650502062
Connection type	Push-in clamp
Frequency	50 50 Hz
Feedback-signal contact	no
Material	Plastic
Type of fastening	Clamping/screw mounting
Number of rockers	1
Impact strength	Not available
Number of modules (module system)	1
Min. depth of built-in installation box	32.0 mm
Compatible with Apple HomeKit	no
Compatible with Google Assistant	no
Compatible with Amazon Alexa	no
Nominal voltage	250 V
Mounting method	EV000383 - Flush-mounted (plaster)
Assembly arrangement	Basic element with central cover plate
Method of operation	Rocker/button
Colour	White
Halogen free	yes
With mounting plate	yes
Surface protection	Untreated
Built-in depth	26.6 mm
Rated current	10.00 A
RAL-number (similar)	9003
Switching current for fluorescent lamps	10 AX
Push button switch	no
Width of device	57.0 mm
Height of device	57.0 mm
Depth of device	40.5 mm
IFTTT support available	no
Degree of protection (IP)	IP20
Washing machine switch	no
Illumination	No
Material quality	Thermoplastic
Label space/information surface	No
Surface finishing	Glossy
Wiring system	Series switch

Technical data		650502062
Suitable for degree of protection (IP)	IP20	
Anti-bacterial treatment	no	
Heating switch	nein	