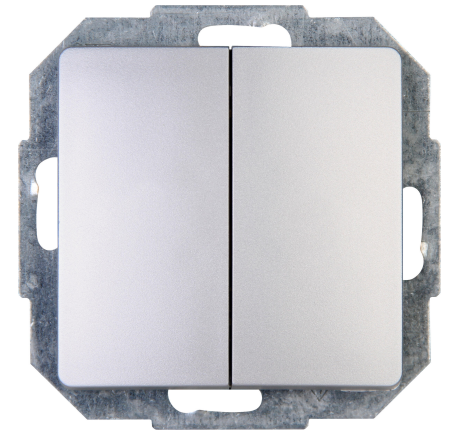


Art.No.	article name
650320082	Double change-over switch

Double change-over switch, 10AX, 250V~, PARIS, silver



Technical data	650320082
Connection type	Push-in clamp
Feedback-signal contact	no
Material	Plastic
Type of fastening	Clamping/screw mounting
Number of rockers	1
Impact strength	IK00
Number of modules (module system)	1
Min. depth of built-in installation box	32.0 mm
Compatible with Apple HomeKit	no
Compatible with Google Assistant	no
Compatible with Amazon Alexa	no
Nominal voltage	250
Mounting method	EV000383 - Flush-mounted (plaster)
Assembly arrangement	Basic element with central cover plate
Method of operation	Rocker/button
Colour	Grey
Halogen free	yes
With mounting plate	yes
Surface protection	Lacquered
Built-in depth	26.6 mm
Rated current	10.00 A
RAL-number (similar)	7040
Switching current for fluorescent lamps	10 AX
Push button switch	no
Width of device	57.0 mm
Height of device	57.0 mm
Depth of device	40.5 mm
IFTTT support available	no
Degree of protection (IP)	IP20
Washing machine switch	no
Illumination	No
Material quality	Thermoplastic
Label space/information surface	No
Surface finishing	Matt
Wiring system	Alternating-/alternating switch
Suitable for degree of protection (IP)	IP20

Technical data		650320082
Anti-bacterial treatment	no	
Heating switch	nein	