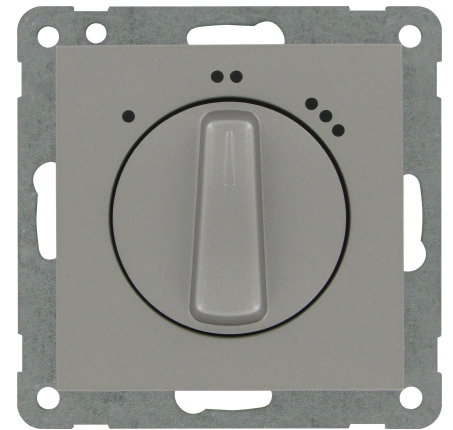


| Art.No.   | article name                           |
|-----------|--|
| 619947082 | ATHENIS - 3 step switch, colour: steel |

ATHENIS - 3-step rotary switch, without zero position, 16A, 250V, protection class IP20, colour: steel



| Technical data                         | 619947082                              |
|--|--|
| Material                               | Plastic                                |
| Type of fastening                      | Mounting with claw and screw           |
| Impact strength                        | IK00                                   |
| Compatible with Apple HomeKit          | no                                     |
| Compatible with Google Assistant       | no                                     |
| Compatible with Amazon Alexa           | no                                     |
| Nominal voltage                        | 250                                    |
| Mounting method                        | EV000383 - Flush-mounted (plaster)     |
| Assembly arrangement                   | Basic element with central cover plate |
| Method of operation                    | Turn button                            |
| Colour                                 | steel                                  |
| Halogen free                           | yes                                    |
| Surface protection                     | Lacquered                              |
| RAL-number (similar)                   | 9022                                   |
| Width of device                        | 55.0 mm                                |
| Height of device                       | 55.0 mm                                |
| Depth of device                        | 14.0 mm                                |
| Material quality                       | Thermoplastic                          |
| Surface finishing                      | Matt                                   |
| Suitable for degree of protection (IP) | IP20                                   |
| Anti-bacterial treatment               | no                                     |