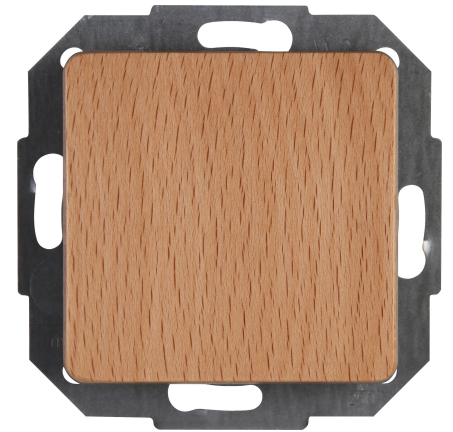


Art.No.	article name
619331081	Pushbutton switch

Pushbutton switch, 10AX, 250V~, MILANO, beech



Technical data	619331081
Connection type	Push-in clamp
With signal lamp	no
Label space/information surface	no
Feedback-signal contact	no
Number of poles	1
Material	Wood
Type of fastening	Mounting with claw and screw
Number of rockers	1
Impact strength	IK00
Transparent	no
Number of modules (module system)	1
Min. depth of built-in installation box	32.0 mm
Compatible with Apple HomeKit	no
Compatible with Google Assistant	no
Compatible with Amazon Alexa	no
Number of revolving contacts	1
Contactless type	no
Nominal voltage	250
Mounting method	EV000383 - Flush-mounted (plaster)
Assembly arrangement	Basic element with central cover plate
Method of operation	Rocker
Colour	Wood
Model	Single push button
Halogen free	yes
Surface protection	Untreated
Rated current	10.00 A
RAL-number (similar)	3013
Number of contacts as normally closed contact	0
Number of contacts as normally open contact	1
Number of contacts as change-over contact	0
Width of device	71.0 mm
Height of device	71.0 mm
Depth of device	49.0 mm
IFTTT support available	no
With light source	no
Surface finishing	Glossy

Technische Beschreibungen, Abbildungen und Leistungsangaben stellen keine zugesagten Eigenschaften dar, sondern sind nur unverbindliche Informationen. Änderungen aufgrund technischen Fortschritts, Normänderungen, veränderter Fertigungsverfahren oder Konstruktionsverbesserungen bleiben ausdrücklich vorbehalten. Stand: 28.03.2024

Technical data		619331081
Suitable for degree of protection (IP)	IP20	
Anti-bacterial treatment	no	
Imprint	None	
Farbe (Kopp-Bezeichnung)	beech	