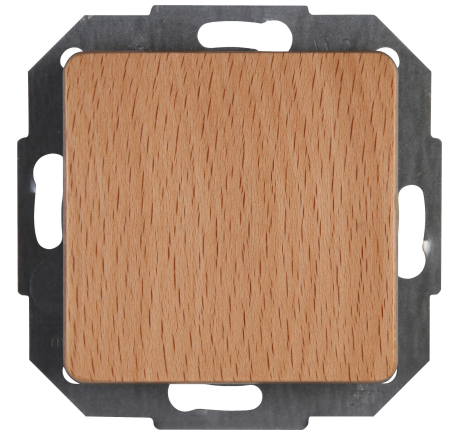


Art.No.	article name
618731082	Cross switch

Cross switch, 10AX, 250V~, MILANO, beech



Technical data	618731082
Connection type	Push-in clamp
Feedback-signal contact	no
Material	Wood
Type of fastening	Mounting with claw and screw
Number of rockers	1
Impact strength	IK00
Number of modules (module system)	1
Compatible with Apple HomeKit	no
Compatible with Google Assistant	no
Compatible with Amazon Alexa	no
Nominal voltage	250
Mounting method	EV000383 - Flush-mounted (plaster)
Assembly arrangement	Basic element with central cover plate
Method of operation	Rocker/button
Colour	Wood
Halogen free	yes
With mounting plate	no
Surface protection	Untreated
Rated current	10.00 A
RAL-number (similar)	3013
Switching current for fluorescent lamps	10 AX
Push button switch	no
IFTTT support available	no
Washing machine switch	no
Illumination	None
Material quality	Thermoplastic
Label space/information surface	No
Surface finishing	Glossy
Wiring system	Intermediate switch
Suitable for degree of protection (IP)	IP20
Anti-bacterial treatment	no
Compliant with UK Building Regulations Part M	no
Heating switch	nein
Farbe (Kopp-Bezeichnung)	beech