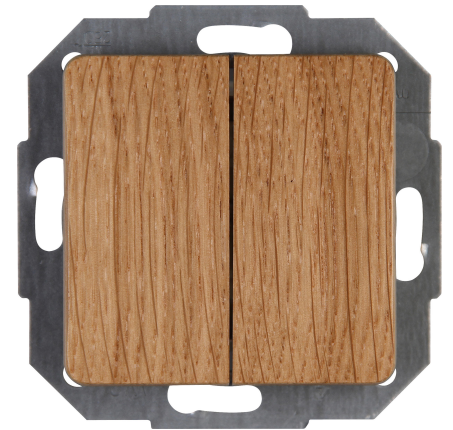


Art.No.	article name
618530085	Series switch

Series switch, 10AX, 250V~, MILANO, oak natural-coloured



Technical data	618530085
Connection type	Push-in clamp
Feedback-signal contact	no
Material	Plastic
Type of fastening	Mounting with claw and screw
Number of rockers	2
Impact strength	IK00
Min. depth of built-in installation box	34.0 mm
Compatible with Apple HomeKit	no
Compatible with Google Assistant	no
Compatible with Amazon Alexa	no
Nominal voltage	250 V
Mounting method	EV000383 - Flush-mounted (plaster)
Assembly arrangement	Basic element with central cover plate
Method of operation	Rocker/button
Colour	Wood
Halogen free	yes
With mounting plate	no
Surface protection	Untreated
Rated current	16.00 A
RAL-number (similar)	9004
Switching current for fluorescent lamps	10 AX
Push button switch	no
IFTTT support available	no
Washing machine switch	no
Illumination	No
Label space/information surface	No
Surface finishing	Glossy
Wiring system	Series switch
Suitable for degree of protection	IP20
Anti-bacterial treatment	no
Heating switch	nein
Farbe (Kopp-Bezeichnung)	oak