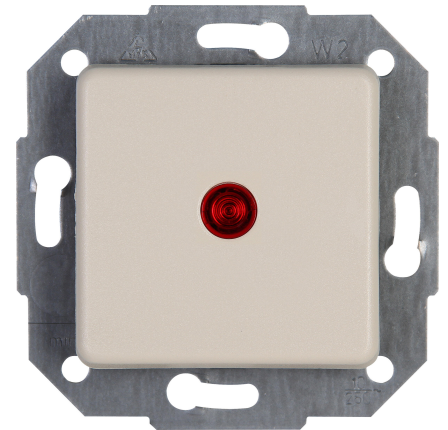


Art.No.	article name
---------	--------------

614601077	Control switch
-----------	----------------

Control switch (off and change-over switch), illuminated, 10AX, 250V~, EUROPA, cream-white

**Technical data****614601077**

Connection type	Push-in clamp
Feedback-signal contact	no
Material	Plastic
Type of fastening	Mounting with claw and screw
Number of rockers	1
Impact strength	IK00
Min. depth of built-in installation box	32.0 mm
Compatible with Apple HomeKit	no
Compatible with Google Assistant	no
Compatible with Amazon Alexa	no
Nominal voltage	250
Assembly arrangement	Basic element with central cover plate
Method of operation	Rocker/button
Colour	White
Halogen free	yes
Surface protection	Untreated
Rated current	10.00 A
RAL-number (similar)	1013
Switching current for fluorescent lamps	10 AX
Push button switch	no
Washing machine switch	no
Surface finishing	Glossy
Suitable for degree of protection (IP)	IP20
Anti-bacterial treatment	no