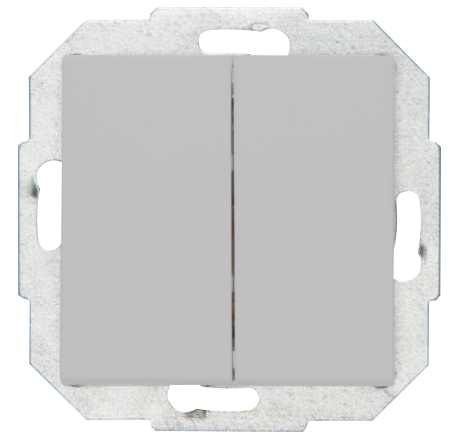


| Art.No. | article name |
|-----------|---|
| 587334088 | ATHENIS - Double changeover switch, colour: grey matt |

ATHENIS - Double changeover switch, nominal voltage 250V~, switching capacity 10AX, protection class IP20, colour: grey matt



| Technical data | 587334088 |
|---|--|
| Connection type | Push-in clamp |
| Feedback-signal contact | no |
| Material | Plastic |
| Type of fastening | Mounting with claw and screw |
| Number of rockers | 2 |
| Impact strength | IK00 |
| Number of modules (module system) | 1 |
| Min. depth of built-in installation box | 32.0 mm |
| Compatible with Apple HomeKit | no |
| Compatible with Google Assistant | no |
| Compatible with Amazon Alexa | no |
| Nominal voltage | 250 |
| Mounting method | EV000383 - Flush-mounted (plaster) |
| Assembly arrangement | Basic element with central cover plate |
| Method of operation | Rocker/button |
| Colour | Grey |
| Halogen free | yes |
| With mounting plate | yes |
| Surface protection | Lacquered |
| Rated current | 10.00 A |
| RAL-number (similar) | 7047 |
| Switching current for fluorescent lamps | 10 AX |
| Push button switch | no |
| Width of device | 55.0 mm |
| Height of device | 55.0 mm |
| Depth of device | 35.0 mm |
| IFTTT support available | no |
| Washing machine switch | no |
| Illumination | No |
| Material quality | Thermoplastic |
| Type of lighting | Other |
| Label space/information surface | No |
| Function lighting | Other |
| Surface finishing | Matt |
| Wiring system | Alternating-/alternating switch |

| Technical data | | 587334088 |
|---|-----------|-----------|
| Suitable for degree of protection (IP) | IP20 | |
| Anti-bacterial treatment | no | |
| Compliant with UK Building Regulations Part M | no | |
| Colour of switch operator | Edelstahl | |
| Heating switch | nein | |