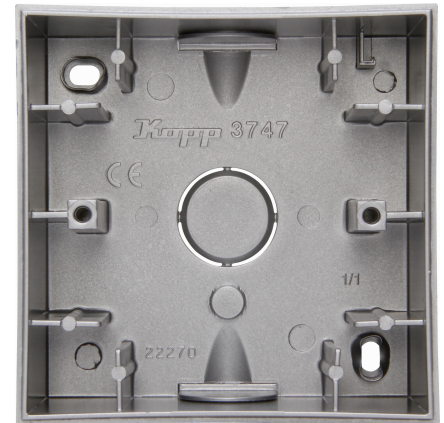


Art.No.	article name
374747008	HK07 - Surface-mounting housing for flush-mount switch ranges, colour: steel

Surface-mounted housing for surface mounting of flush-mounted switch range matching the switch ranges HK07, with fastening screws, protection class IP20, colour: steel



Technical data		374747008
Shape		Square
Number of units		1
Shock resistant		no
Material		Plastic
With cover frame		no
Transparent		no
Number of modules (module system)		1
Suitable for modular domestic switching devices		no
Cross-trunking mounting		no
Assembly arrangement		Surface mounted housing
Colour		steel
Halogen free		yes
Surface protection		Lacquered
With cable entry		yes
RAL-number (similar)		9022
With screw gland entry		no
Width of device		85.0 mm
Height of device		85.0 mm
Depth of device		44.0 mm
With duct entry		yes
Degree of protection (IP)		IP20
Material quality		Thermoplastic
Mounting direction		Horizontal and vertical
Surface finishing		Matt