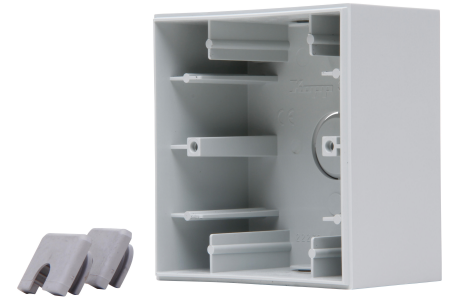


Art.No. article name

374734008 HK07 - Surface-mounted housing, 1-fold, colour: grey matt

1 fold surface-mounted housing for surface mounting of flush-mounted switch range matching the switch ranges HK07, with fastening screws, protection class IP20, colour: grey matt



Technical data		374734008
Shape	Square	
Number of units	1	
Shock resistant	no	
Material	Plastic	
With cover frame	no	
Transparent	no	
Number of modules (module system)	1	
Suitable for modular domestic switching devices	no	
Cross-trunking mounting	no	
Assembly arrangement	Surface mounted housing	
Colour	Grey	
Halogen free	yes	
Surface protection	Lacquered	
With cable entry	yes	
RAL-number (similar)	7047	
With screw gland entry	no	
Width of device	85.0 mm	
Height of device	85.0 mm	
Depth of device	44.0 mm	
With duct entry	yes	
Degree of protection (IP)	IP20	
Material quality	Thermoplastic	
Mounting direction	Horizontal and vertical	
Surface finishing	Matt	