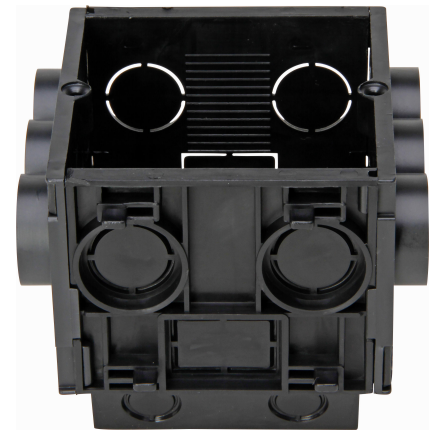


Art.No.	article name
355602047	Junction box, flush mounted, 60x60x65mm, IP20, profi-pack: 10 pcs., colour: black

Flush-mounted junction box, 60x60x65mm, max. 400V, self-extinguishing up to 750°C, operating temperature: -5°C until 60°C, mounted with two screws, resistant to acids and alkalis, stackable for standard IEC 80x80 devices and also for local Belgian devices for several switches, Profi-Pack: 10pcs., colour: black



Technical data	355602047
Shape	EV000220 - rectangular
Internal depth	65.0 mm
Length mm	0.1 mm
Sealable	no
Material	Plastic
With screening	no
With nail lugs	no
With screws	yes
Inlet from the rear	yes
Provided with revolving ring	no
Housing feed-through by seal membrane	no
Housing feed-through by nozzle	no
Housing feed-through by step membrane	no
Number of included spouts	0
Transparent cover	no
Colour	Black
Width	70.0 mm
Halogen free	yes
Surface protection	Untreated
Connectable	yes
Luminaire hook mounting	no
Housing feed-through by break-out opening	yes
Air tight	no
Equipped with	None
Construction type	Built-in installation box (device box)
Circuit integrity	None
Cover model	None
Number of inlets	22