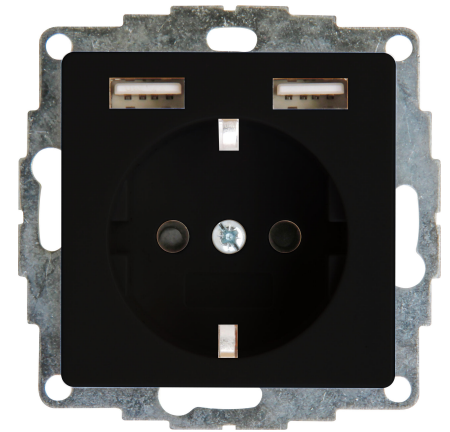


Art.No.	article name
---------	--------------

296250006	HK07 - Earthed socket outlet with 2 USB charging sockets, colour: black matt
-----------	------------------------------------------------------------------------------

HK07 - Earthed socket outlet with built-in 2 USB charger, 16A, 250V~, colour: black matt



Technical data	296250006
----------------	-----------

Connection type	Screw and Push-in clamp
With signal lamp	no
With enhanced contact protection	yes
Frequency	50 - 50
Label space/information surface	no
Eject-mechanism	no
Material	Plastic
Rated fault current	0.00 A
Type of fastening	Mounting with claw and screw
Impact strength	IK00
Transparent	no
With miniature fuse	no
With loop through function	yes
With function lighting	no
With orientation lighting	no
Number of modules (module system)	1
Number of active pins (round)	0
Number of active pins (flat)	2
Min. depth of built-in installation box	32.0 mm
Compatible with Apple HomeKit	no
Compatible with Google Assistant	no
Compatible with Amazon Alexa	no
Metallic colour	no
Nominal current	16.00 A
Nominal voltage	250 V
Mounting method	Unterputz
Colour	Black
Model	Socket outlet CEE 7/3 (type F)
Halogen free	yes
Lockable	no
With hinged lid	no
Surface protection	Lacquered
Number of phases	1
With on/off switch	no
For heavy conditions (according to VDE)	no

Technical data		296250006
Rotated central insert	no	
Over voltage protection	no	
Fault current protection	no	
Insulated mounting	no	
RAL-number (similar)	9005	
Width of device	55.0 mm	
Height of device	55.0 mm	
Depth of device	41.1 mm	
Number of socket outlets switchable	1	
IFTTT support available	no	
Concurrently switching neutral conductor	no	
Special power supply	No special power supply	
Material quality	Thermoplastic	
Surface finishing	Matt	
Imprint/indication	None	
Suitable for degree of protection	IP20	
Anti-bacterial treatment	no	
With built-in bluetooth speaker	nein	
Number of ports USB-A	2	
Number of ports USB-C	0	
Max. current rating of USB power supply	2.40 A	
With Wi-Fi signal repeater	nein	
Colour of switch operator	sonstige	
Protective contact	flat	
Concurrently switching neutral conductor	0	
Number of loop throughs	1	